

# SMART CITIES میگزین

Issue: 03

We are Building A Smart Pakistan

Jan-Feb: 2024

**SILICON VILLAGE**  
CONNECT, COLLABORATE, INNOVATE

# Initiative 24

INNOVATE | INVEST | IMPACT



**CAPITAL**  
SMART CITY

[www.smartcitypk.com](http://www.smartcitypk.com)



**LAHORE**  
SMART CITY

[www.lahoresmartcitypk.com](http://www.lahoresmartcitypk.com)

*We know what you want...*



Capital Smart City now introduces

# CAPITAL HILLS VILLAS

Built around an 18 Hole PGA Standard Golf Course on the terraces of the majestic hills, these Villas will be custom-built to suit your lifestyle. It's your home, so you should be making the right decision.

**10 MARLA TO 4 KANALS VILLAS**

Standard | Semi-furnished | Fully-furnished | Luxury-furnished



# SMART CITIES

ہیکرین

We are Building A Smart Pakistan

## TEAM SMART CITY

### Chairman (FDHL)

Zahid Rafiq

### Managing Director

Jahanzeb Zahid

### Director Sales & Marketing

Mujeeb Ahmad Khan

### Design and Content

Creative Department  
Linkers Advertising

### Photography

Media PR Smart Cities

### Website

[www.smartcitypk.com](http://www.smartcitypk.com)  
[www.lahoresmartcitypk.com](http://www.lahoresmartcitypk.com)

### Social Media

[f /smartcitypk](#) | [/lahoresmartcitypk](#)

[@ /smartcitypak](#) | [/lahoresmartcity](#)

[t /smartcitypk1](#) | [/lahoresmartcity](#)

[v capitalsmartcity](#)



An Exclusive Interview with  
**MR. M. ASLAM MALIK**  
(GROUP CHIEF OPERATING OFFICER)  
CAPITAL AND LAHORE SMART CITIES



**PIONEERING VIRTUAL  
INNOVATION WITH  
V-WORLD**

**CAPITAL AND LAHORE  
SMART CITIES  
MASTER PLAN**

**CAPITAL AND LAHORE  
SMART CITIES  
PARTNERS**

# SMART CITIES

ہیکرین

Issue: 04  
Mar-Apr: 2024

**Get in touch to  
book your ads**

Note: Magazine ads can only be placed by Smart Cities partners

GM Media & PR  
**+92 333 5202900**





An Exclusive Interview with  
**MR. M. ASLAM MALIK,**  
(GROUP CHIEF OPERATING OFFICER)  
Capital and Lahore Smart Cities

*Today, we have the privilege of engaging in an enlightening conversation with Mr. Aslam Malik, the Group Chief Operating Officer of Capital and Lahore Smart Cities, to gain insights into the visionary initiatives shaping the future of urban development in Pakistan.*

## INSPIRATION BEHIND CAPITAL AND LAHORE SMART CITIES

**Q1: What inspired the conception of Capital and Lahore Smart Cities, and how do they reflect FDHL's vision?**

A: The genesis of Capital and Lahore Smart Cities stems from a visionary outlook to redefine urban living and reflects FDHL's commitment to delivering exceptional quality of life and fostering economic growth.

## OVERVIEW OF SMART CITIES CONCEPT

**Q2: Mr. Malik, could you please provide us a comprehensive overview of the concept of smart cities and why they are pivotal in today's world?**

A: Certainly, smart cities are urban areas that leverage technology, data, and innovation to create sustainable, efficient, and resilient ecosystems. They are pivotal in today's world as they offer solutions to pressing global challenges like climate change, rapid urbanization, and social inequality. By integrating smart transportation, energy, water management, and waste reduction systems, smart cities can significantly reduce their environmental footprint and enhance the quality of life for citizens. Additionally, they foster innovation, drive economic growth, and create new opportunities for businesses and individuals alike.

## INITIATIVE-24 - OVERVIEW

**Q3: What is the significance of Initiative-24 for Capital and Lahore Smart Cities?**

A: Initiative-24 embodies our commitment to pioneering excellence in urban development and realizing the vision of both cities as world-class hubs of innovation and livability.

## KEY PROJECTS UNDER INITIATIVE-24

**Q4: Could you elaborate on the key projects under Initiative-24 and their expected completion?**

A: Definitely, Initiative-24 is a road map to achieve the targets and fulfill our promises, it embodies a multifaceted approach to propel the smart city into a realm of comprehensive development across various sectors, let me share a brief detail;

The Phase-I of interchange is nearing completion, with about 12 booths installed and all allied work finalized. We're eagerly awaiting official permissions, which we anticipate receiving soon. On the west side, significant progress has been made, including the installation of 10 booths, entry and exit points, and fiber optics laying. With the assistance of FWO & NHA, M-TAG installations are in their final stages. However, connecting to the motorway requires fence cutting permission and subsequent bridge construction, following security protocols.

Similarly, the plans for Overseas Prime-II have been received by SJ, spanning over 7000 acres, aligning with customer demand. Inclusivity is our priority, as we aim to incorporate individuals left out from previous balloting due to various reasons. Executive blocks' extension is in the plan, offering priority plots to members. Our vision is to clear all liabilities within this fiscal year.

Now, after vertical development we are focusing on Horizontal development surpassed expectations, allowing us to focus on vertical expansion. Our aim is to transform the smart city into a sustainable, green, and livable community. Essential amenities like electricity, gas, and drinkable tap water are already in place. Recreational areas, schools, and mosques enhance residents' quality of life. Entertainment projects, including hotels and adventure parks, are underway as part of Initiative 24.

We're extending invitations to investors interested in partnering with us. Opportunities range from hospitality projects to real estate ventures. Collaboration with UK doctors for a 500-bed hospital project exemplifies our inclusive approach. Similarly, Anfal Holidays' hospitality projects opens various investment avenues.

Our focus is on developing smart residential communities with modern amenities. We're committed to creating sustainable and livable environments for residents.

In health sector The establishment of a 500-bed hospital, along with a medical college, underscores our commitment to providing high-quality healthcare services. We welcome collaboration opportunities with foreign doctors to enhance specialty services. We're introducing entertainment projects like hotels and adventure parks to enrich residents' experiences. Recreational facilities such as parks and coffee shops further enhance the smart city's appeal.

Anfal Holidays is spearheading tourism development initiatives, offering partnership opportunities in hospitality projects. Our transportation services ensure convenient travel for visitors within Rawalpindi/ Islamabad.

## FUTURE IMPACT OF CAPITAL AND LAHORE SMART CITIES

**Q5: How do you envision the future impact of Capital and Lahore Smart Cities on Pakistan's socio-economic landscape?**

A: Both cities represent catalysts for socio-economic transformation, attracting investment, fostering entrepreneurship, and elevating living standards while serving as models for sustainable urban development regionally and globally.

## ROLE OF CORPORATE PARTNERS

**Q6: What role do corporate partners play in the realization of Initiative-24, and how do you ensure mutually beneficial collaborations?**

A: Corporate partners bring expertise, resources, and innovation, prioritizing collaborative relationships built on trust, transparency, and shared goals to drive mutual growth and benefit the larger community.

## FUTURE VISION OF CAPITAL SMART CITY MANAGEMENT

**Q7: Could you shed light on the future vision of Capital Smart City management and the strategic role of the COO in steering these projects forward?**

A: The future vision revolves around sustainability, innovation, and inclusivity, aiming to create a model city for the 21st century. As COO, my role is to provide strategic direction, inspire teams, and ensure alignment with core values. We are envisioning an unmatched living standard in the country and set benchmarks to follow with pride.

## IMPACTFUL EDUCATION PROJECTS

**Q8: Among the education projects, which will have the most significant impact on shaping the future of youth?**

A: The establishment of Smart STEM High Schools and Colleges, coupled with specialized institutions for special children, will have a transformative impact by equipping youth with skills, knowledge, and values needed to thrive.

## OBJECTIVES IN HEALTHCARE

**Q9: What are the key objectives of healthcare projects under Initiative-24?**

A: Healthcare projects aim to enhance accessibility, affordability, and quality of services by establishing state-of-the-art hospitals, specialized institutes, and medical colleges.

## PROMOTION OF SPORTS AND ADVENTURE

**Q10: How do you plan to realize aspirations for sports and adventure through Initiative-24?**

A: Initiatives include developing cricket and football grounds, polo arenas, shooting ranges, and adventure arenas to create a dynamic sports ecosystem for enthusiasts of all ages and interests. We have the privilege of building International level cricket and football stadiums fulfilling the requirements of ICB and FIFA. Similarly, Our residents will be enjoying the international level environment in the sports training academies

like we have recently entered into an agreement with LALIGA in the venture of providing football training academy.

I also want to mention here that in Smart Cities people don't have to go out for the adventure sports as we have everything in our Adventure Arena right from para gliding to Air gliding we have all the facilities.

## CONTRIBUTION IN TOURISM

**Q11: How will tourism contribute to the growth and promotion of Capital and Lahore Smart Cities?**

A: Tourism will drive economic growth, cultural exchange, and global goodwill by showcasing Pakistan's beauty and diversity, creating opportunities for local businesses, job creation, and infrastructure development.

## ROLE OF VIRTUAL TECHNOLOGIES

**Q12: How do virtual technologies shape the future of urban living in Capital and Lahore Smart Cities?**

A: Virtual technologies enhance accessibility, efficiency, and convenience in various sectors, including education, healthcare, events, and customer service, overcoming geographical barriers and creating inclusive, connected communities.

## SILICONE VILLAGE'S ALIGNMENT

**Q13: Can you elaborate on how the Silicone Village project aligns with the overall vision of Capital Smart City?**

A: Silicone Village fosters technological innovation and investment within Capital Smart City by providing infrastructure and support services tailored to tech startups and companies, catalyzing economic growth and prosperity.

## MEASURES FOR INCLUSIVITY AND ACCESSIBILITY

**Q14: What strategies are in place to promote inclusivity and accessibility within the projects and initiatives?**

A: We prioritize creating environments that are welcoming, inclusive, and accessible to people of all backgrounds and abilities, incorporating universal design principles into infrastructure projects and engaging communities to understand and address their needs.

Using Technology for the benefits, smart cities are secured by introducing card based entry which means only the residents and their workers will be allowed to enter the city and premises, even the students will have the special entry card making their presence informed to the parents.

## FUTURE GOALS BEYOND INITIATIVE-24

**Q15: What long-term goals and aspirations do you have for the continued development and success of Capital and Lahore Smart Cities?**

A: Our long-term goals include creating sustainable, resilient, and vibrant communities that thrive in the digital age, fostering innovation, economic diversification, and environmental stewardship, and positioning both cities as premier destinations for living, working, and investing. You would be happy to know that we are on the voyage to bring more Smart Cities too.

## SUPPORT FOR STARTUPS AND BUSINESSES

**Q16: What benefits are offered for startups and businesses looking to set up in Silicon Village or the incubation center?**

A: We offer free space and subsidized rates for entrepreneurs during the first year of operation, along with mentorship, skills development, and partnerships to support their growth and success.

## IMPORTANCE OF MOTORWAY INTERCHANGE

**Q17: What importance and benefits does the opening of direct access from the motorway to Capital Smart City offer for the future?**

A: The opening of interchange motorway and integration of other residential projects enhance connectivity, accessibility, and community collaboration, fostering innovation, economic growth, and quality of life within the smart city.

## EDUCATION IMPACT OF SMART STEM SYSTEM

**Q18: How do you envision the impact of the Smart STEM Education System on Pakistan's future workforce and economy?**

A: The Smart STEM Education System aims to cultivate a highly skilled workforce capable of driving innovation and competitiveness in key sectors, laying the foundation for a knowledge-based economy that will fuel Pakistan's growth and prosperity in the long term.

## SELECTION PROCESS FOR EDUCATIONAL INSTITUTIONS

**Q19: Could you provide insight into the selection process for the locations of educational institutions within Capital Smart City and Lahore Smart City?**

A: The selection process considers factors like accessibility, infrastructure availability, and alignment with the overall master plan, working closely with educational stakeholders to create integrated campuses that offer a conducive learning environment and promote holistic development.

## ROLE OF SPECIALIZED HEALTHCARE INSTITUTIONS

**Q20: How do specialized institutions like the Smart Institute of Rehabilitation Medicine fit into the broader healthcare ecosystem of the smart cities?**

A: Specialized institutions enhance the healthcare ecosystem by addressing specific needs and promoting wellness through cutting-edge technology and best practices, improving access to healthcare and enhancing the overall quality of life for residents.

## CONTRIBUTION OF ANFAL HOLIDAYS TO TOURISM

**Q21: How will Anfal Holidays contribute to positioning Pakistan as a desirable tourism destination, and what unique experiences can travelers expect?**

A: Anfal Holidays showcases Pakistan's beauty and hospitality through comprehensive travel packages and personalized services, offering travelers unforgettable experiences that

highlight the country's diversity and richness while promoting responsible tourism and collaboration with local communities.

## DIFFERENTIATION OF MOVENPICK HOTEL

**Q22: What sets Movenpick Hotel apart from other hospitality options, and how will it enhance the overall experience for residents and visitors?**

A: Movenpick Hotel distinguishes itself by offering unparalleled luxury, comfort, and hospitality, providing exquisite dining options, world-class amenities, and personalized services that enhance the overall experience for residents and visitors.

## EVOLUTION OF VIRTUAL WORLD SERVICES

**Q23: How do you see Virtual World's services evolving to meet the changing needs of a global audience?**

A: Virtual World leverages technology to break geographical barriers and connect people globally, continuously innovating to provide solutions that enhance connectivity, efficiency, and convenience in various sectors, empowering individuals and organizations to thrive in an interconnected world.

## ROLE OF SPORTS TOURISM IN CAPITAL SMART CITY

**Q24: In the context of Sports Tourism, how does Capital Smart City plan to leverage its facilities and events to attract visitors and promote healthy lifestyles within the community?**

A: Capital Smart City promotes sports tourism and healthy lifestyles through its state-of-the-art facilities and exciting events, organizing sports tournaments, fitness challenges, and wellness programs to engage residents and visitors in physical activity and encourage healthy habits.

## SUSTAINABILITY MEASURES IN DEVELOPMENT

**Q25: What measures are being taken to ensure sustainability and environmental responsibility in the development of Capital Smart City and Lahore Smart City?**

A: Sustainability and environmental responsibility are prioritized in planning, construction, and operations, incorporating green building designs, optimizing energy and water usage, preserving natural habitats, and promoting eco-friendly transportation options to create smart cities that enhance quality of life while safeguarding the planet.

## CONCLUSION:

*In conclusion, Mr. Malik Aslam's insights provide a compelling glimpse into the transformative journey of Capital and Lahore Smart Cities under Initiative-24. With visionary leadership, strategic planning, and collaborative partnerships, these cities are poised to redefine urban living, drive economic growth, and inspire innovation for generations to come.*

# Initiative<sup>24</sup>

INNOVATE | INVEST | IMPACT

## OVERVIEW

Introducing the first-ever internationally designed and licensed Capital & Lahore Smart Cities, envisioned by Mr. Zahid Rafiq, Chairman of FDHL (Pvt) Ltd. Our commitment to providing world-class living and amenities is unwavering. From health and education to recreation and business opportunities, we deliver on our promises, thanks to the trust of our customers.

Our pledge extends to executing diverse mega projects of the highest quality across Pakistan, spanning IT, education, health, sports, tourism, and construction industries. Presenting Initiative-24, we invite corporate partners to join us in shaping the future. Together, we ensure flexible business models that benefit all parties, fostering mutual growth and advancing Pakistan's prosperity. Alhamdulillah.



**Prime Location;** a technology hub in Capital Smart City, occupies 127.49 acres. It benefits from the smart city infrastructure and offers access to modern amenities, including educational institutions, healthcare facilities, serviced apartments, shopping malls, and a substantial 33% green area, making it an ideal environment for innovation and growth regarding Business Scope. Silicone Village is specifically designed to cater to tech-related businesses. **WE WELCOME:**

1. **Artificial Intelligence & Machine Learning Setups**
2. **Big Data Analytics, Quantum & Cloud Computing Companies**
3. **Virtual Reality (VR) & Robotics Startups**
4. **Fintech Companies**
5. **Science and Technology Institutions**
6. **Technology Skill Development Centers**
7. **Electric Vehicles Startups**

**INCUBATION CENTER:** Silicone Village's incubation center offers flexible space arrangements for rent, allowing startups and businesses to incubate and flourish in an ideal environment.

Investment Details:

- **Joint Venture Opportunities.**
- **Leasing Options.**
- **Rental Option.**
- **Payment Flexibility.**

**Profit-Sharing Model:** Investors are entitled to a substantial share of profits, which may be 50% or other mutually agreed model.

## EDUCATION

### About Us

- **Introduction:** Smart Cities and Royal Orchard Projects offer technology-driven, vibrant, and holistic education.
- **Vision:** Technology-integrated, value-based education.
- **Mission:** Provide blended, skill-based, and holistic education to prepare youth for a competitive future.

## EDUCATION SYSTEM

- **Overview:** Futuristic, tech-led environment with a focus on preparing students for a rapidly changing world.
- **STEM Education:** Centric and fully integrated with EdTech, emphasizing academics, IT, robotics, AI, and smart boards.
- **Streams:** Matric-based, with Cambridge System Schools opening soon.
- **Core Competencies:** Strong foundation, EdTech integration, foreign languages, compulsory sports, and personality development.
- **Objectives:** Excellent academics, high STEM scores, effective communication, cultural adjustment, elegant personalities, and confident leadership.
- **Core Values:** Respect, kindness, empathy, loyalty, compassion, integrity, courage, and positivity.

## AFFILIATIONS

- Federal Board of Intermediate & Secondary

Education (FBISE), Islamabad

- National University of Modern Languages (NUML)
- Institute of Inclusive Education (IIE) FDEIs Directorate
- Cambridge Board (in process)
- International Baccalaureates (IB) (in process)
- West Australian Board (in process)

## NETWORK

- Largest private education network in Pakistan, with 265 planned schools and colleges.
- Initial spread across five cities, with expansion planned.

## FACILITIES

- Purpose-built, company-owned buildings
- Comprehensive sports facilities and grounds
- Eight to ten labs for skill-based education
- Language and robotic labs
- Smart boards in every classroom
- Modern cafeteria and dining halls

## CURRICULAR ACTIVITIES

- Study tours
- Guest speakers
- Inter-school debates and competitions
- Inter-school sports competitions

## SPORTS

- Compulsory sports program, including football, cricket, volleyball, basketball, athletics, and taekwondo.

## LEADERSHIP

- Emphasis on leadership training from early years, producing confident, robust, and cultured youth.

## FOREIGN LANGUAGE

- Compulsory foreign language (German or Chinese) for global citizenship.
- NUML certification for language proficiency.

## PERSONALITY DEVELOPMENT

- Focus on producing well-rounded, cultured, and confident individuals.

## ADMISSIONS

- Mainly in Feb/March and July/August, with limited seats and special case admissions.

## SCHOLARSHIPS

- Merit-based and need-based scholarships available.

## CONDUCT & DISCIPLINE

- High standards of conduct and discipline expected, with detailed SOPs for students and parents.

## 1. EDUCATION PROJECTS TO BE COMPLETED IN 2024

### A. CAPITAL SMART CITY



**1. SMART STEM HIGH SCHOOL & COLLEGE**  
(For Boys & Girls) OS Prime.



**2. SMART STEM HIGH SCHOOL & COLLEGE**  
(For Girls) OS Central Sec - E..



**3. SMART STEM HIGH SCHOOL & COLLEGE**  
(For Boys) OS Central Sec - A.



**4. SMART STEM HIGH SCHOOL**  
Executive Dist, Sec - B

### B. LAHORE SMART CITY



**1. SMART STEM HIGH SCHOOL & COLLEGE**  
(For Boys & Girls) OS Central Sec - A



**2. SMART STEM ELEMENTARY SCHOOL**  
OS Central Sec - A



**3. SMART SPECIAL CHILDREN ACADEMY**  
(Class 1 - 12) OS Central, Sec - A

## 2. EDUCATION PROJECTS TO BE COMMENCE IN 2024

### A. CAPITAL SMART CITY



**1. SKILL DEVELOPMENT CENTER**  
(Men & Women)



**2. SMART STEM GIRLS COLLEGE**  
(Cambridge Stream)

**3. Smart Academy for Special Children**  
(Class 1 – 12)

**4. Smart Institute of Professional Development (SIPD)**  
Education Dist.

**5. Smart STEM Future School**  
Education Dist.

**6. Smart Tech University**  
Dist. OS Prime

**7. Girls Hostel for OS Students**

**8. Boys Hostel for OS Students**



### B. ROYAL ORCHARD SARGODHA

**1. SMART STEM ELEMENTARY SCHOOL**

**2. SMART ACADEMY FOR SPECIAL CHILDREN** (Class 1 – 12)

### C. LAHORE SMART CITY

**(1) Smart Skill Development Center**

**(2) Girls Hostel for OS Students**

**(3) Boys Hostel for OS Students**

### D. ROYAL ORCHARD MULTAN

**(1) Smart STEM High School & College**

(For Boys & Girls)

**(2) Smart Academy for Special Children**

**(3) Skill Development Center**

(For Women & Men)

### E. ROYAL ORCHARD SAHIWAL

#### 1. SMART STEM HIGH SCHOOL & COLLEGE

(For Girls & Boys)



**2. SMART ACADEMY FOR SPECIAL CHILDREN** (Class 1 – 12)

## HEALTH

### VISION

FDHL is committed to revolutionizing healthcare and setting new standards for patient-centered care in the communities we serve.







## 3. HEALTHCARE PROJECTS COMPLETED IN 2024

### A. CAPITAL SMART CITY

**SMART INSTITUTE OF REHABILITATION MEDICINE (SIRM):** A state-of-the-art facility for diagnosis, treatment, and rehabilitation of persons with physical, speech, and auditory disabilities, and manufacturing of limb prosthesis using modern technology.

**SMART CITY HOSPITAL:**

A 50-bed hospital with all medical and surgical specialties, providing technology-driven healthcare services to residents and the general public.

**PLANNED TO COMMENCE IN 2024**

**Smart Medical Clinics:** 5 clinics will be established in close proximity to residences and workplaces, providing easy access for consultation and referrals when needed.



EXECUTIVE B



SILICON VILLAGE



OS EAST SECTOR M



OS PRIME (CHAKRI ROAD)



**SMART CITY HOSPITALS**

**(a) Smart City Hospital (250 Beds)**

OS Central - 1 Sector (A)

**(b) Smart City Hospital (250 Beds)**

Healthcare District

OS Central - 1 Sector (A)

**SPECIALIZED INSTITUTIONS**

**CAPITAL HILLS:**

**A. SMART INSTITUTE OF DERMATOLOGY & AESTHETIC (50 BEDS)**

Institute of Dermatology & Aesthetics will offer:

- Expert diagnosis and treatment for a wide range of skin conditions

- Aesthetic consultations and treatments to help individuals achieve their desired aesthetic goals while prioritizing safety and natural-looking results

**CAPITAL HILLS:**

**B. SMART INSTITUTE OF MENTAL HEALTH (100 BEDS)**

An Institute of Mental Health, aiming to promote psychological well-being of residents. Institute will offer:

- Comprehensive mental health services
- Treatment of mental illnesses
- Research to advance understanding of mental illness
- Education to the community about mental health issues

**MEDICAL, DENTAL & NURSING COLLEGES**

**A. MEDICAL COLLEGE - 150 SEATS/ CLASS**

To ensure that the community has access to quality healthcare services and medical expertise through:

- Education
- Research
- Community outreach programs

**MEDICAL COLLEGE WILL PLAY A SIGNIFICANT ROLE IN PROMOTING:**

- Quality medical education
- Public health initiatives
- Disease prevention
- Health education

**B. DENTAL COLLEGE - 75 SEATS/CLASS**

Establishing a dental college will offer several benefits to both residents and the broader community, including:

- Comprehensive academic and clinical training programs
- Preparation for careers in dentistry and oral healthcare
- Education and training for future dental professionals, including dentists, dental hygienists, and dental assistants

**C. NURSING COLLEGE - 100 SEATS/CLASS**

Nursing college will provide:

- Comprehensive academic and clinical training programs
- Knowledge, skills, and competencies required to provide high-quality patient care
- Help meeting the deficiency/demand of quality nursing cadre within the country and globally

### B. LAHORE SMART CITY

- (1) Smart Medical Clinic
- (2) Smart City Hospital
- (3) Smart Rehab Centre
- (4) Medical College



**SMART MEDICAL CLINIC**



**SMART CITY HOSPITAL**

### C. ROYAL ORCHARD MULTAN

- (1) Smart Medical Clinic
- (2) Teaching Hospital
- (3) Medical College
- (4) Smart Rehabilitation Centre

### D. ROYAL ORCHARD SARGODHA

1. Smart Medical Clinic
2. Smart City Hospital (100 Beds)

### E. ROYAL ORCHARD SAHIWAL

1. Smart Medical Clinic
2. Smart City Hospital (50 Beds)



# SPORTS

**1. CAPITAL SMART CITY IS EMPHASIZING SPORTS AND ADVENTURE, PROVIDING ACCESSIBLE OPPORTUNITIES FOR ALL MEMBERS, RESIDENTS, AND VISITORS OF ALL AGE GROUPS. OUR GOAL IS TO ENSURE THAT THEY DON'T NEED TO GO ELSEWHERE FOR ENTERTAINMENT, SPORTS, AND ADVENTURE. OUR CITIES WILL BLEND ADVENTURE, SPORTS, INNOVATION, AND EXCELLENCE.**

**2. ACHIEVEMENTS SO FAR:**

**A. CRICKET:** Developed a PCB standard Cricket ground with cutting-edge facilities, ready for 1st class matches. First tournament in Apr 2024.

**B. FOOTBALL:**

\* State-of-the-art football ground, ready by 1st half 2024.

\* First tournament in Sep 2024, meeting FIFA standards.

**C. POLO:**

Establishing a polo ground, ready by End

2024, with 60 polo ponies and a tournament.

**D. SHOOTING ARENA:**

Developing a classic shooting range, meeting international standards, with skeet shooting, Rifle shooting, Pistol shooting, and 50-meter shooting range. Partially ready by mid-2024.

**E. ADVENTURE ARENA:**

Creating an adventure arena with zip-lining, Dirt bike, sky cycle, sky cart, suspension bridge, paint ball, roller coaster, kids play area, and more. Functional by mid-2024.

**1. UPCOMING FACILITIES (BY 2024 OR MID-2025):**

**A. WATER SPORTS:** Establishing facilities for water sports like para sailing, speed boating, fishing, wind surfing, sailing, boating, and more.

**B. INDOOR ARENA:**

- Constructing a versatile indoor arena for various sports, with indoor swimming pools, Tennis courts, Badminton courts, Squash courts, Bowling, Sauna baths, Steam baths, and more.

- Construction starts in July/August 2024.

**C. AIR ADVENTURE:**

Developing facilities for air adventure activities like paragliding, skydiving, and hot air ballooning.

**D. MOUNTAINEERING AND TRACKING:**

Establishing mountaineering and tracking trails, providing opportunities to explore nature and challenge physical limits.

**E. CRICKET AND FOOTBALL ACADEMIES:**

Exploring childhood aptitude and virtual management.

**F. CYCLING:**

Starting a healthy cycling activity in a healthy atmosphere.

**G. MARATHON:**

Starting with a 10 km long Marathon in the second half of 2024.

Our goal is to create an environment where every resident can find their passion, challenge their limits, and celebrate victories. Let's make 2024 a year where adventure and sports unite to create lasting memories and build a legacy of excellence. Get ready for an exciting journey! Adventure awaits.

## ANFAL HOLIDAYS: A THRILLING TOURISM VENTURE BY CAPITAL SMART CITY



In the heart of Pakistan's visionary landscape lies Capital Smart City, where innovation meets inspiration. Here, we don't just build cities; we create experiences that enrich lives. And now, we're thrilled to unveil our latest endeavor: Anfal Holidays, a pioneering tourism venture designed to showcase Pakistan's natural beauty and hidden treasures to the world.

### THE RISE OF FOREIGN TOURISM!

In recent years, Pakistan has emerged as a vibrant and sought-after destination for travelers from around the globe and the tourism industry in Pakistan is experiencing remarkable growth, with an increasing number of foreign visitors exploring its natural wonders and historical landmarks. In 2024, the country's tourism sector is poised for further expansion, driven by investments in infrastructure, improved security measures, and a growing interest in sustainable travel experiences.

### WHY ANFAL HOLIDAYS?

At Capital Smart City, our mission has always been to enhance lives and connect communities. Anfal Holidays is our response to the growing demand for authentic travel experiences that celebrate Pakistan's diverse culture, heritage, and natural beauty. We believe in the transformative power of travel, and Anfal Holidays is our invitation to rediscover Pakistan through a lens of wonder and exploration.

### THE SCOPE OF ANFAL HOLIDAYS:

Imagine waking up to the breathtaking vistas of Hunza, where towering mountains reflect in crystal-clear lakes, and the air is infused with the essence of ancient cultures. Anfal Holidays transforms these enchanting landscapes into unforgettable experiences, offering tailored travel services that promise to capture hearts and ignite wanderlust. From the bustling streets of Lahore to the serene valleys of Gilgit-Baltistan, every destination beckon with promises of adventure and cultural immersion.

### A TASTE OF PAKISTANI HOSPITALITY AND CULTURE:

Our commitment to promoting Pakistan's culture is at the heart of Anfal Holidays. Each itinerary is carefully crafted to immerse travelers in local traditions, from attending colorful festivals to meeting artisans and savoring authentic cuisine. We aim to showcase Pakistan's rich heritage while supporting local communities and preserving cultural legacies.

### SERVICES AT YOUR DISPOSAL:

At Anfal Holidays, each service is crafted with passion, dedication, and a deep commitment to creating extraordinary experiences. Your journey is our canvas, let us paint it with wonder, adventure, and unforgettable moments.

### TAILORED TRAVEL SERVICES: Your Pathway to the Breathtaking North

Embarking on a journey towards the breathtaking northern areas of Pakistan, where the mighty Himalayas beckon with their majestic allure. Anfal Holidays' tailored travel services are your passport to discover this natural wonderland. Whether you seek the thrill of high-altitude trekking or the serenity of remote valleys, every detail of your expedition is meticulously curated to make every moment unforgettable.



### ELEVATING HOSPITALITY:

#### Where Comfort Meets Dedication

Hospitality is more than just service—it's a commitment to ensuring your comfort and well-being throughout your stay. At Anfal Holidays, our unmatched hospitality services redefine luxury. From welcoming accommodations nestled amidst scenic vistas to personalized attention that anticipates your every need, indulge in an experience where every stay feels like coming home.

### CORPORATE TRAVEL REDEFINED: Efficiency with a Touch of Luxury

For the discerning business traveler, Anfal Holidays elevates corporate travel into an experience of efficiency and elegance. Combine business with pleasure as you seamlessly navigate meetings and conferences in style. Let us orchestrate your itinerary, allowing you to focus on your objectives while we take care of the rest.

### INVITING SPORTS ADVENTURE: Where Thrill Meets Nature's Playground

Calling all adventurers! Dive into the heart-pounding excitement of South Asian games, champion trophy events, river rafting, paragliding, ice climbing, rock climbing, hiking, trekking, and ice hockey in Pakistan. Anfal Holidays invites thrill-seekers to discover the exhilaration of sports and adventure against the backdrop of Pakistan's stunning landscapes.



Anfal Holidays celebrates the spirit of female empowerment through tailored femme tourism packages. Join us for unique travel experiences that inspire exploration, foster connection, and create shared memories. Whether it's a girls' getaway or a solo expedition, embark on a journey where every step is a celebration of womanhood.

### SKIP-GENERATION: Creating Meaningful Connections Across Generations

Experience the heartwarming trend of skip-generation travel, where grandparents and grandchildren embark on nostalgic journeys together. Choose destinations with sentimental value, forging deeper connections and creating cherished memories that bridge generations.

### DISCOVER AFFORDABLE HEALTHCARE: Combining Medical Treatment with Exploration

For international visitors seeking world-class healthcare at affordable costs, consider Pakistan with Anfal Holidays' medical tourism offerings. Combine medical treatment with exploration, discovering the beauty of our country while prioritizing your well-being.

### WHY CHOOSE US?

Our achievements speak volumes—establishing a strong presence in the UK market and developing the prestigious Offto Lakeview Hotel in Islamabad. These milestones reflect our unwavering commitment to excellence and innovation in the tourism industry.

### THE FUTURE OF TRAVEL:

As we look ahead, Anfal Holidays envisions a future where Pakistan's beauty is accessible to all, where partnerships bloom on an international scale, and where responsible tourism is the cornerstone of our legacy, where your story becomes our destination.

## CAPITAL SMART CITY: PIONEERING VIRTUAL INNOVATION WITH V-WORLD



In the ever-evolving landscape of technology and customer-centric innovation, Capital Smart City is once again at the forefront, unveiling its latest ground-breaking venture: V-World, an innovative virtual platform poised to revolutionize the way we engage, collaborate, and thrive in the digital realm. At Capital Smart City, our commitment to enhancing lives and empowering communities drives us to explore new horizons, and V-World embodies this ethos with a vision of inclusivity, accessibility, and limitless potential.

### WHY V-WORLD:

Capital Smart City has always been synonymous with transformative initiatives that enrich lives. With V-World, our mission is to harness the power of technology to transcend geographical barriers, connect diverse communities, and unlock a world of possibilities. This innovative virtual platform is not just about technology—it's about empowering people to engage, create, and collaborate in ways that were once unimaginable.

### THE SCOPE OF V-WORLD: A UNIVERSE OF SERVICES

Imagine a world where the boundaries of traditional services fade away, replaced by a seamless digital ecosystem that caters to every need and aspiration. At V-World, we offer an array of services designed to enhance every aspect of life:

### V-QURAN: BEYOND BORDERS, ENLIGHTENING SOULS

Our V-Quran service exemplifies the transformative impact of V-World. With esteemed Qari Sahiban guiding over 300 students from across the globe, this virtual initiative transcends geographical limitations, making education accessible to all.

### V-CLINIC: REDEFINING HEALTHCARE, ONE CLICK AT A TIME

V-World's V-Clinic service connects individuals with renowned medical professionals, revolutionizing healthcare by providing high-quality medical care remotely. Accessing medical advice and treatment has never been more convenient.

### V-TV: A NEW DIMENSION IN VIEWING

Step into the immersive world of V-TV, where viewers navigate through a virtual environment to access channels and programs with a simple click. Enjoy your favorite content on multiple devices, anytime, anywhere.

### V-CALL CENTRE: REAL-TIME ENGAGEMENT, ELEVATED

Our V-Call Centre offers a seamless platform for Capital Smart City's customers and representatives to engage in real-time interactions, ensuring efficient communication and problem resolution.

### WHY CHOOSE US?

At V-World, excellence is not just a goal—it's a standard we uphold in everything we do. Our achievements speak volumes, from establishing a strong presence in the UK market to developing innovative solutions like V-World. We are committed to excellence, integrity, and collaborative innovation.

### THE FUTURE OF TECH:

As we look ahead, V-World envisions a future where technology transcends boundaries, where partnerships thrive, and where virtual experiences redefine our understanding of connectivity and collaboration.

## CONSIDER THE BENEFITS OF VIRTUAL EVENTS:

**GLOBAL REACH:** Reach audiences worldwide without the constraints of physical location.

**COST EFFICIENCY:** Reduce costs associated with venue rentals, travel, and accommodation.

**ACCESSIBILITY:** Make events inclusive and accessible to diverse participants.

**ENVIRONMENTAL IMPACT:** Minimize carbon footprint by eliminating the need for travel.

### CONCLUSION: Redefining Tomorrow, Today

In the visionary landscape of Capital Smart City, V-World is more than a platform—it's a testament to our commitment to progress, innovation, and customer-centric excellence. Embark on this transformative journey with us, and let V-World empower you to engage, create, and connect like never before.

*The future is virtual, and at Capital Smart City, it's within your reach.*



# CSC MASTER PLAN



# LSC MASTER PLAN

www.lahoresmartcitypk.com





**arquivio** architects

### ONE CAPITAL

Located in Capital Smart City, The new Sustainable city of Pakistan



Inspiration always comes primarily from the site, light, climate, the topography, and secondly from the geometry, technique, experience, creativity, and art. Everything is melded together through spatial operations that are of interest to us from an architectural standpoint, resulting in the project solution. In this case, we have drawn inspiration from the works of the Spanish international sculptor, Eduardo Chillida, who explored the concepts of mass and void. Secondly by Nature, following the commanding profile of Khairi Murat Reserved Forest and the ancient traces of Margala Hills, we endeavoured to integrate that contour as an integral part of the project's essence, crafting a dynamic skyline for the new city.

### CHILLIDA DRAWINGS

One Capital sketch of the Masterplan inspired in Chillida works.



MORE THAN 1,700 RESIDENCES FROM STUDIO APARTMENTS, 1, 2 AND 3 BED APARTMENTS UNTIL 3/4 BED DUPLEX.

90,000 SQFT ONE SERVICE OFFICES  
131,000 SQFT RETAIL SURFACE



A TOTAL SURFACE OF 160,000 SQFT OF GREEN AREAS, FROM A CENTRAL PARK TILL ROOF GARDENS, CREATING A POLLUTION FREE AND SUSTAINABLE ENVIRONMENT. 30,000 SQFT WATER SURFACES, 60,400 SQFT SPORT FACILITIES, 4,300 FT FOOTING CIRCUIT.



Arquivio Architects

### ENDORSEMENT LEADER

Daniel Fraile

Founding partner Ph.D, Doctor of Design,  
Arquivio Architects

Daniel Fraile + Juanjo Soria

Calle Antonia Ruiz Soro, 33, 28028 Madrid, Spain

www.arquivio.com



## THE PAVILION

Continuing with the same Primary strategy employed in the One Capital project, we once again draw upon the strokes of Eduardo Chillida for the inception of the idea. However, we strive to salvage elements or ideas from the rich history of the city of Lahore. This fusion of artistic inspiration and historical context aims to imbue the project with depth and resonance, honoring both contemporary artistic influences and the enduring legacy of Lahore.

### THE PAVILION AERIAL VIEW OF THE MASTERPLAN INSPIRED IN CHILLIDA WORKS.



WITH MORE THAN 650 RESIDENCES IN SEVERAL TOWERS OF 13 FLOORS. FROM STUDIO APARTMENTS, 1, 2 AND 3 BED APARTMENTS UNTIL 1,2 AND 4 BED DUPLEX, A BUSINESS HOTEL WITH MORE THAN 280 ROOMS, AROUND 180 SERVICED OFFICES AND AN OUTSTANDING SHOPPING COMPLEX IN A PODIUM THAT CONNECTS ALL THE TOWERS.

Sustainable and efficient in the materials, the use of the energy and the recycling strategy. General layout with functions

# desert INK

Desert INK

### A. ENDORSEMENT LEADER

Duncan Denley  
Manager Director  
Desert INK

201a, Building 4 - Dubai Design District  
Dubai - United Arab Emirates  
www.desert-ink.com

Capital Smart City (C.S.C.) are delighted to announce that the award-winning, Dubai-based Landscape Architecture practice desert INK has been appointed to design C.S.C.'s flagship Adventure Park. Internationally renowned for their innovative thinking and context-driven landscape designs, the desert INK team jumped at the chance to bring their expertise to Pakistan and are currently engaged in conceptualizing this one-of-a-kind park which fuses nature with adventure. Founder and Managing Director of desert INK, Duncan Denley was delighted to expand upon this exciting opportunity; "While desert INK have delivered projects in Pakistan before, our first visit to C.S.C. made us keenly aware that this site is special. We were drawn to the valleys and plateaus and the spectacular views over

the Chahan reservoir. We immediately recognized our role as a custodian of the wonderful natural attributes of the site, while also enabling visitors to access and enjoy all that it has to offer. It's a question of balance between nature and human activity; we need to understand the site's capacity for development and that can only be assessed by site visits"

The desert INK team spent several days exploring and mapping the site on foot before forming a vision for the site. Appropriate activities such as cycling, zip wires and horse riding will be carefully integrated into the park, while an extensive children's adventure playground will surely be a hotspot for families. Nature lovers will enjoy birdwatching and fishing, while those seeking an overnight experience can book a glamping experience in Nature Valley. "Our first exploration of Nature Valley with the C.S.C. team was really eye-opening" enthuses Denley, "it's a wonderfully peaceful natural valley surrounded by cliffs and teeming with wildlife, yet sits within a stone's throw of one of C.S.C.'s most appealing developments, La Mer. It needs a very light touch. We will enable visitors to enjoy the valley while enhancing its character with some simple amenities which preserve the essence of the place. The Nature Valley will be a place to escape and unwind and enjoy the simple things in life. A campfire, a barbeque and some good company in this wonderful natural setting will be a magical experience".

When the climate makes outdoor adventures challenging, visitors need not be concerned.

The Rock will provide a state-of-the-art interior rock climbing, abseiling and adrenalin park housed within a landmark building draped over the valley edge. Inspired by the distinctive geological formations found on the site, The Rock is not just a centre for activity, but a landmark which will draw visitors in from the adjacent La Mer district. Foodies are likewise well catered for at the Adventure Park, with three food outlets on site. For a rustic 'back to nature' BBQ vibe, visitors will be at home in the Nature Valley Grill, while families can gather for food and drinks at The Lookout, boasting spectacular views over the surrounding activities. Those enjoying a day at The Rock can enjoy quick bites at the Adrenalin Café after conquering the thrills of the park. For those less inclined towards adventure sports, the Park contains hiking routes, horse riding and picnic grounds as well as an arts and crafts centre.





Capital Hills is the extravagant zone of Capital Smart City, with a blend of natural settings and modern architecture comprising of villas, townhouses, apartments, and state-of-the-art amenities that cater to the needs of its residents. The natural surroundings embellish the minimalist town plan carefully designed for one's contemporary and smart lifestyle.

The vision is to create an architecture that will showcase the perfect blend of modernity and sustainability, with every aspect of the development thoughtfully planned out to meet the needs of futuristic living.

The apartments and villas are designed keeping in mind the contemporary lifestyle. Surrounded by lush green landscapes, they offer a serene and peaceful living environment that adds immense value to the project.

Modern amenities, facilities and a leisure club building are part of this smartly designed housing project featuring F&B, swimming pools, tennis, a gym, a cinema, and play areas. Other amenities include mosque, modern clinics, banquet halls, etc.

DSA Architects

### ENDORSEMENT LEADER

Aleksandar Milojkovic  
Senior Associate DSA- Dubai  
Convention Tower - Al  
Mustaqbal St - Trade Centre -  
Za'abeel 1  
Dubai - United Arab Emirates  
www.dsa-arch.com



### VILLAS

The villas in this exclusive community are meticulously designed to cater to the needs and desires of its residents. Inspired by three distinct architectural styles - contemporary, Mediterranean, and classic Georgian English - these homes exude charm and elegance.

The layout is carefully planned to maximize comfort and convenience for its residents. Ensuite bedrooms on the ground floor offer breathtaking views of the lush gardens and potentially even a glimpse of the nearby golf course. Drawing rooms are situated near the entrance, providing a grand space for entertaining guests. Living areas with dining zones offer a cozy spot for family gatherings, while kitchens are equipped with modern amenities.

Maid's rooms are located on the upper floor, ensuring privacy for household staff. All bedrooms feature en-suite configurations and built-in closets, adding to the overall functionality and appeal of these luxurious homes.



### APARTMENTS

The architectural style of the apartment building is a perfect blend of contemporary economical design with a traditional touch. The construction type includes a concrete structure with columns, beams, and slab, along with 200mm external blockwork and 100mm to 200mm internal blockwork. The building features multiple split unit systems with an external main unit concealed on the balcony and a concealed VRV ceiling cassette system in common areas. Community amenities include an indoor gym, outdoor pool with adjacent deck, kids play area, and barbecue zone. The landscape parking areas have green zones to provide trees for natural shading. The concept of the building includes two L-shaped buildings optimizing plot area and providing a central concealed shared landscaped area for all main amenities. The building shape allows for flexibility in plot arrangement to suit possible constraints in the masterplan.

Overall, the apartment building showcases a harmonious blend of modern functionality and traditional aesthetics.



### SOUQ

The Souq is foreseen to be the retail facility for the community. General circulation will be naturally ventilated with shade roof linking all retail individual unit blocks creating flexibility for potential level changes.

The souq will offer various retail outlets including a Supermarket and 25-30 retail units encompassing both F&B options as well as general retail. The design includes varying unit sizes to accommodate different retailers, with double-height units allowing for mezzanine levels and storage zones. This arrangement will provide opportunity for the retailer to create a more dynamic, trendy and fashionable style of boutique and retail spaces, optimising frontage exposure and a more desirable architecture.

Public facilities such as toilets and prayer rooms, along with service support facilities like administration offices and waste areas, ensure that the souq is not just a place to shop but also a community center.



### CLINIC

A well-equipped Clinic is also one of the amenities, which has 3 to 4 consultation rooms, each dedicated to specific specialties. It includes a reception area with an office, as well as a waiting area with a designated space for children.

Other important facilities include storage areas for medical supplies, public toilets, pantry for staff members, nurse room for conducting basic procedures, treatment room for emergencies, and a BOH/waste area for proper disposal of medical waste.



### BANQUET

The Banquet is foreseen to be used mainly for special private event such as weddings which strongly rely to cultural practice.

The proposed design includes a double building configuration with a service zone at the back, allowing for efficient loading and manoeuvring. The main banquet hall can be divided into two event zones, each with its own pre-function area, VVIP room, bridal room, public washrooms, and external function space.

The architectural style of the banquet is simple contemporary, surrounded by green areas and function lawns.



## MOSQUES

The design of the mosques is contemporary with one minaret. The Grand Mosque, designed to

accommodate **2,000** worshippers, will feature an imam quarter with a two-bedroom apartment, a library and study room for religious education, a spacious prayer courtyard, and ample parking space.

The smaller mosque, catering to **1,000** worshippers, will also have similar amenities.





### GOLF CLUB

The Golf Club is an iconic building in the community with its contemporary style and large outdoor spaces, designed to optimise the stunning golf views surrounding it. The architecture ensures that all areas have a spacious feel while maintaining a sense of human scale. Large, shaded zones are provided throughout the external areas, allowing for comfort and relaxation.

The combination of the Golf Club and Leisure Club under an iconic roof structure creates a unique and cohesive space for members to enjoy. The linked basement connected to a common service yard/delivery zone ensures efficient operations behind the scenes.

The design caters to the needs of all members and staff. An ample car parking is provided, as well as additional slots for corporate golf events.

A drop-off area with concierge/valet desk assistance and bag drop ensures a smooth arrival experience for guests. An open-to-sky arrival with views over the golf course and canyon sets the tone for a memorable stay. The pro shop is well-equipped with an adjacent external cart staging area to accommodate 30 to 60 carts in double rows. Additionally, a rack for up to 40 golf bags and a small computer booth station are essential for seamless operations.

The general manager's office will be located near the pro shop with views out to the starter area. Male and female lockers, joined by a double-locked sound buffer door, can be combined into one large locker room for

major events, ensuring privacy and convenience for all guests.

The administration offices and cart store at the golf club are essential components of the facility, providing a hub for all operations and services. Located under the club house, the cart store houses 80 golf carts, 2 beverage carts, and a transport vehicle for members' convenience, as well as rental and member's club storage.

The general storage area and maintenance zone ensure that equipment is properly stored and maintained to keep the course in top condition. The wash down area allows for easy cleaning of carts and equipment after use.

The design of a golf academy is crucial in providing an optimal learning environment for students. The building is strategically connected to the driving range and practice area to ensure easy access for participants. It includes key areas such as a reception/lounge/retail area, office space, storage facilities, hitting bays, toilets/lockers, and a gym.

Golf comfort stations are also available as a stand-alone building strategically spread across the course, allowing players easy access to restroom facilities no matter where they are on the links. With separate areas for both men and women, the comfort stations ensure that all golfers have their needs met. The spacious servery and storage area allow for a variety of F&B items to be offered, catering to the tastes of all players.

The Leisure Club offers a wide range of

amenities and activities to cater to the needs of all guests. With separate male and female gyms, locker rooms, and hydro spas, members can enjoy their workouts in a comfortable and private environment. The club also boasts two squash courts, a table tennis room, and a cinema with 200 seating capacity for entertainment purposes.

For families with children, there is a dedicated kids club as well as a library and game room for quiet relaxation. Outdoor pools for adults and children provide the perfect setting for fun in the sun, while indoor pools offer year-round swimming opportunities. With three tennis courts available for use, members can stay active while enjoying the fresh air.

The F&B offerings at the golf club are truly exceptional, catering to every member's dining needs. The all-day restaurant, boasts 150 indoor seating and 100 outdoor seating, perfect for enjoying a meal after a round of golf. For those seeking a more upscale dining experience, the fine dining restaurant offers 100 to 150 indoor seating and 100 outdoor seating. The bar lounge provides a cozy spot for members to relax with 50 indoor seating. At the leisure club, members can enjoy a variety of culinary experiences. The coffee shop restaurant offers 150 indoor seating for casual gatherings. The barbecue restaurant is perfect for larger groups, with 200 indoor seating and three outdoor seating areas of 150 outdoor seating each.



FDH has a visionary vision of making "Pakistan Smart" starting with 2 mega projects namely: Capital Smart City and Lahore Smart City. Surbana Jurong Singapore is honored to be selected as a trusted consultant for FDH one of the largest urban development companies in Pakistan, to masterplan and design for both iconic projects. Both new cities seek to contribute to the betterment of the regions by addressing key aspects of urban inadequacies: providing a diversity of jobs, world-class infrastructure, preserving heritage, creating identity, a clean and green environment, efficient/ effective resource management as well as convenient and quality living.



Surbana Jurong Consultant Singapore  
**A.ENDORSEMENT LEADER**

Mr. Lim Siah Gim  
Senior Vice President, Surbana Jurong Planning Group  
Mr. Andre Yusak  
Senior Executive Urban Designer  
Surbana International Consultants  
Surbana Jurong Infrastructure Pte. Ltd.  
Surbana Jurong Campus  
36 Cleantech Loop, #02-22,  
Singapore 636740  
www.Surbanajurong.com



### CAPITAL SMART CITY

It is located 20 minutes drive from Islamabad, Capital Smart City was conceived in 2016 and positioned itself as the first Smart City in Pakistan. It is developed initially as a 27000 acres development, which will grow into a megapolis for 3.5 million people in the long term. The initial city will be developed in partnership with DHA Rawalpindi.

### LAHORE SMART CITY

It is located 15-minute drive from Lahore, proximate to the government-initiated River Ravi Development (RRUDA). Lahore Smart City was initiated in 2019 as a continuation of the legacy of Smart City Development by FDH. The city was expected to grow in conjunction with RUDA development, strengthening its connectivity with North Lahore Regions.

Surbana Jurong has witnessed FDH's commitment to grow to become one of the largest urban developers in Pakistan with the strength of 400 staff consisting of planners, engineers, and architects, dedicated to the quality development of both Smart Cities.

Project Progresses is promising and updates are available publicly via (<https://www.youtube.com/capitalsmartcity>). We trust that FDH continues on its Vision to make Pakistan smart and its dedication to quality, providing good quality urban life to all their investors.

When completed these 2 projects shall put Pakistan on the world stage in terms of smart cities.



# CAPITAL SMART CITY GATE PRECINCT: A PREMIER DESTINATION

The Gate Precinct is the first point of allure for CSC's esteemed guests, strategically positioned near Islamabad International Airport. The Gate Precinct is intended to cater to diverse groups; from the golf enthusiasts of the upcoming 18-Hole PGA Golf Course; to the students of NUTECH University and the Residents of CSC.

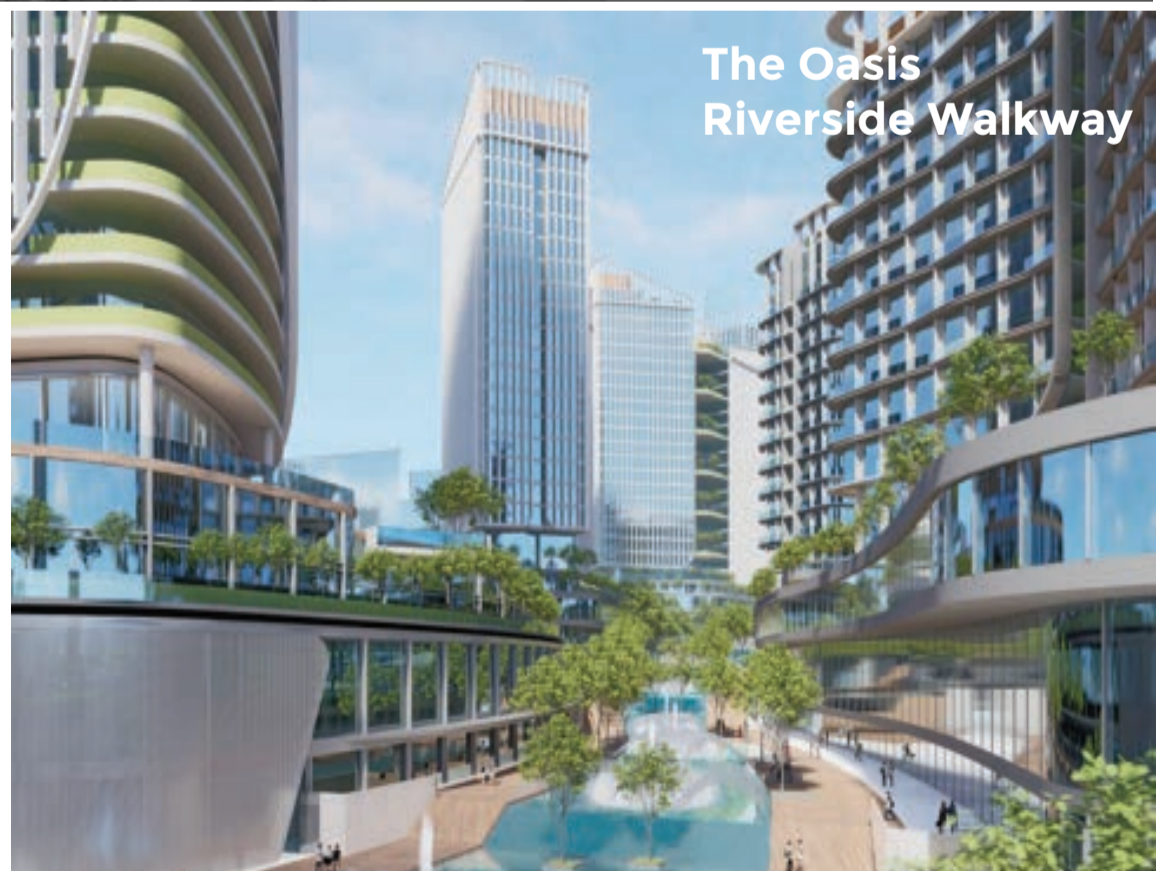
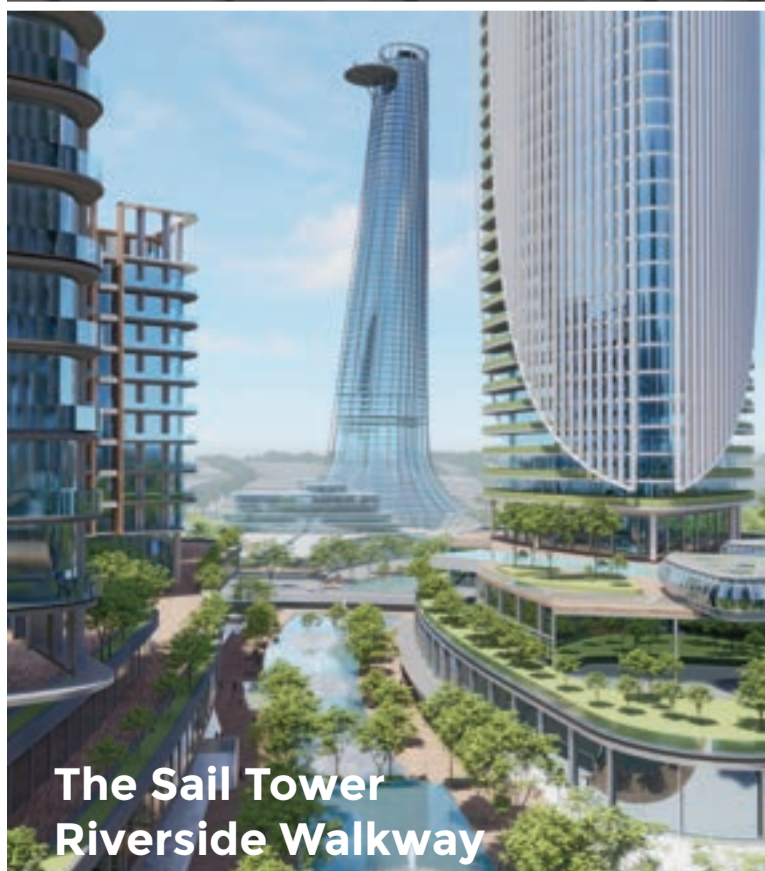
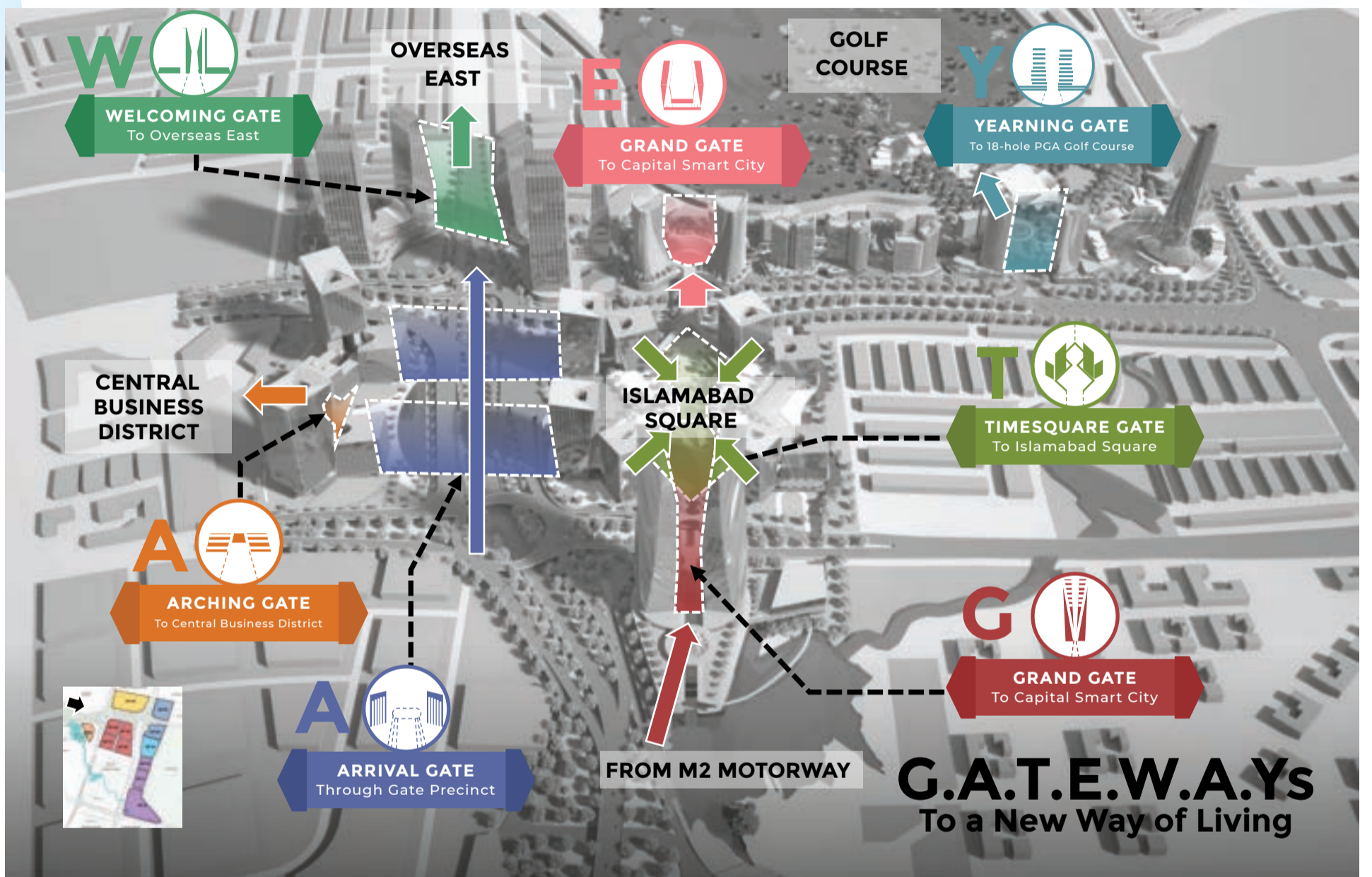
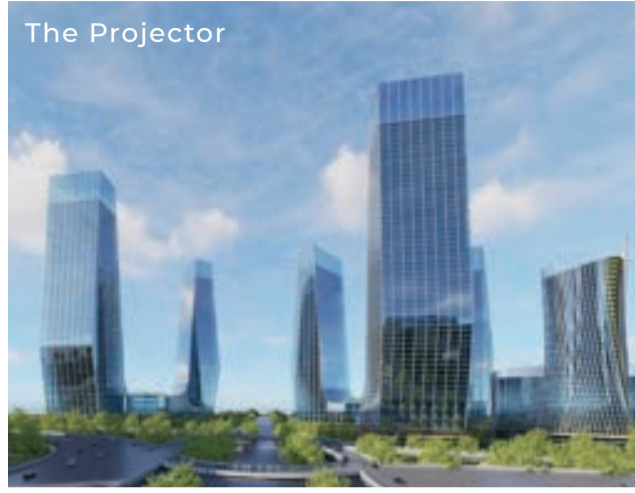


The Gate Precinct of Pakistan's first Smart City is divided into 7 smaller sub-districts. Each subdistrict has its own Unique Attraction



## THE 7 GATES

A key aspect of the site is the raised pedestrian corridor that connects The Grand Gate (GP-01) to The Time Square Gate of Islamabad Square (GP-02 to GP-05) and culminating in Enchanting Gate (GP-09). This ensures that the entirety of the Gate Precinct is accessible for pedestrians. Critically, the pedestrian walkway and the riverside walkway of the hospitality sector (GP-10 to GP-12) ensure pedestrians can easily access scenic and nature-orientated spaces.





Thrilled to announce that the Pakistani cricketing maestro, Salman Butt, joins the Royal Smart League as our prestigious brand ambassador! Witness the magic of this momentous signing ceremony at Lahore's Tricon Tower, where excellence meets sophistication. Stay tuned for an epic journey ahead!



Marking a momentous occasion, we inaugurated the Jamia Mosque at Capital Hills, graced by the esteemed presence of Shaikh Nuri Muhammad Ali, the Key Holder of Roza-e-Rasool (PBUH). His presence and dua served to invoke numerous blessings of Allah (SWT) for all those who attended the ceremony.



A momentous milestone has been reached in our quest for a greener and cleaner planet! We're thrilled to announce that Polaris LLP has partnered with Capital Smart City in a groundbreaking MoU, prioritizing environmental sustainability and the fight against climate change.



In a significant stride forward, FDH and Molecule officially join hands, solidifying their contract with the inauguration of the Molecule Office in Capital Smart City. This collaboration promises to bring innovative solutions and dynamic energy to our community, further enhancing our commitment to excellence and progress.



At a heartwarming contract signing ceremony, Anfal Holidays and Offto Resort unite for the grand reveal of "Offto Lakeview Hotel" in Capital Smart City. This 200+ bed haven, nestled in the Tourism Village, weaves cultural richness, adventure, and eco-friendly luxury. Join us on our heartfelt journey as we redefine hospitality, crafting unforgettable moments, paving the way for enhanced tourism in Pakistan.



In the gentle glow of an unforgettable evening at the Pakistan National Council of Arts, Capital Smart City and the Sufi Council joined hands to unveil the book "Whispers in the Stones: A Sufi's Quest Through Time." With cherished guests from around the world, including Mrs. Andrea Wicke of Austria, Mr. Georg Steiner of Switzerland, Mr. Park Kijun of Korea, and U.S. Deputy Chief of Mission Andrew Schofer, the night resonated with a shared love for glocal culture and connection.



A distinguished Kuwaiti delegation explored the visionary landscape of Capital Smart City, forging alliances for a greener future. They commended the project for its smart utilities and its stern commitment to eco-friendly urban development.



In an unprecedented collaboration, a delegation from Dubai Sustainable City visits Capital Smart City, aligning efforts towards achieving zero carbon excellence. Swipe to go through the snippets of the visit!



In the heart of Capital Smart City at F11, Axis Group unveils its new office, a symbolic step toward innovation and growth. This moment signifies a commitment to modern living and smart development, echoing the sentiment that smart is indeed the way to thrive.



WE ARE BUILDING A SMART PAKISTAN

SMART  
LIFE STYLE

LA MER AND  
LAKE VIEW TERRACES  
FUN, JOY &  
LUXURIOUS  
LIFE

La-Mer  
SHOP, DINE & PLAY



UK : +44 788 138 8270 & 80 | UAN : +92 51 111 - 444 - 475 | Toll Free: +92 800 SMART (76278)

www.smartcitypk.com smartcitypk smartcitypak sales@smartcitypk.com smartcitypk1 capitalsmartcity



Pakistan's first Smart Apartment Living concept  
 CAPITAL SMART CITY IS PROUD TO LAUNCH



more than just an  
*apartment*

Studio | 1 Bed | 2 Bed | 2 Bed Duplex | 3 Bed | 3 Bed Duplex | 4 Bed Duplex